

DLR SYSTEM COMPONENTS  
FLOW FRAME TYPE COMBI

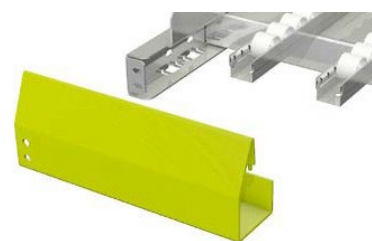
- For small to medium loads up to a maximum of 170 kg/sqm
- Very flexible and low-cost version, yet stable due to corner screw connection
- Easy to install due to inserted beams and tool-free installation of the roller and guide profile
- Easy and fast (tool-free) change of channel pitch
- Mounting of the roller and guide profiles in slotted front or rear frames (spread protection, no shifting!)
- Lateral adjustment grid of approx. 7,5 mm
- Continuous side profile on request with picking tray (inclination: 6°/15°)
- Special designs on request



**FLOW-FRAME-STORAGE-SYSTEMS**

- Flow racks mean permanent availability, very compact storage and a particularly high picking performance of many articles made of cartons, plastic boxes, boxes at low investment costs
- Typical applications of the flow racks are in mail order and Internet trade, food, white goods distribution center, provision in production and assembly
- Flow frame systems are also called general cargo flow rack, cardboard flow rack, or carton flow
- Flow racks usually work according to the **First In First Out** principle. (LIFO possible to)
- On one side of the rack, the flow frame is loaded, on the other side are the picking area to unload the goods
- Automatically equipped by stacker cranes or shuttle is also possible
- Movable single racks are also possible
- The flow racks can be designed as a stand-alone solution or integrated in pallet racks

FLOWFRAME  
TYPE HEAVY LOAD



- For particularly high loads (300 kg/sqm)
- Maximum field width: 3,800 mm
- All components completely screwed
- Usually screwed to shelf supports or adapters
- Equipped with roller tracks and guide profile such as combi frames
- Continuous side bolsters on request with picking tray (inclination: 6°)

FLOWFRAME  
STEPS



- Better access of the upper flow levels
- Heights and widths variable
- AQS anti-slip punching or anti-slip coating
- Mounted with supports on the floor

FLOWFRAME  
HANDLES



- Use in conjunction with steps (for operator safety)
- Attached to upper continuous frame
- Material: steel tube, surface powder coated

FLOWFRAME  
CONVEYOR SUPPORT LEGS

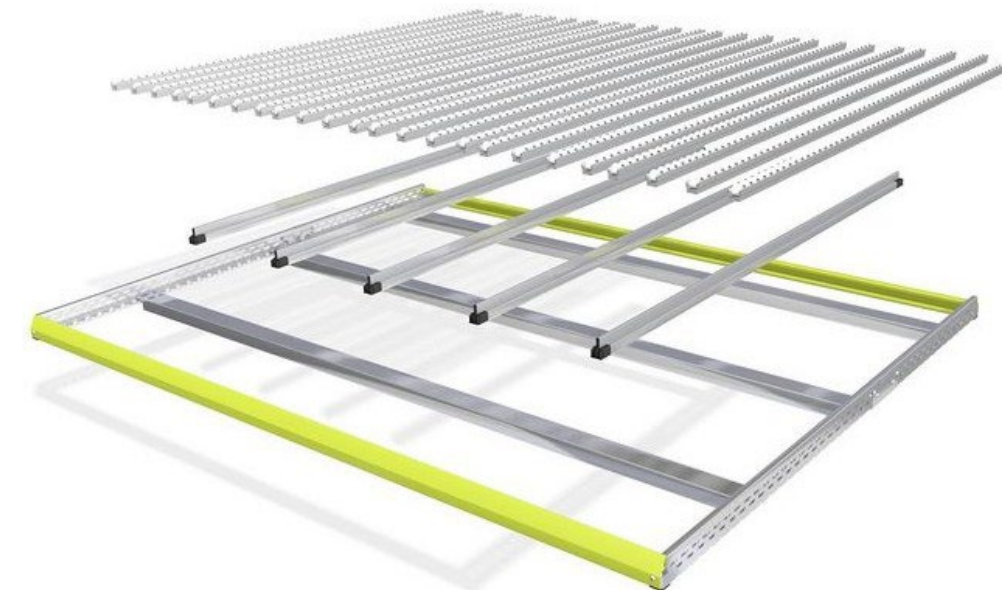


- For the support of driven or non-driven roller conveyors (along the continuous rack)
- Made of supports with adjustable feet and support brackets
- Support consoles individually perforated
- Special versions on request (e.g. for overhead old cardboard conveyors)

FLOWFRAME  
SCANNING PROFILES



- Glued to front and rear cheeks
- Marking of the channels by inserting labels
- Height: 30/40 mm





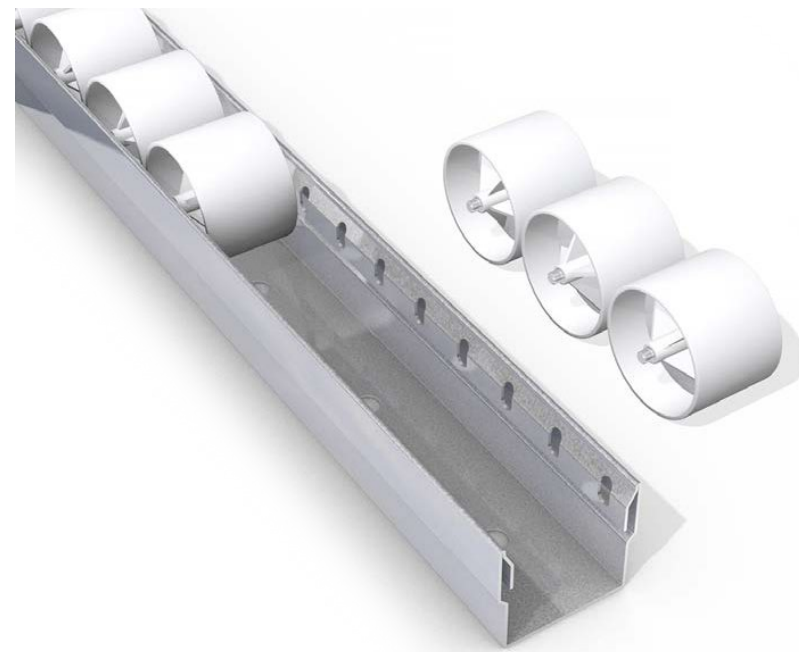
- ▶ STRUCTURE
- ▶ GUIDING
- ▶ ROLLERTRACKS
- ▶ FRAME
- ▶ BRAKEROLLERS
- ▶ SCANNING PROFILES
- ▶ BRAKE CLIP
- ▶ PICKING SHELF
- ▶ HANDLES
- ▶ PIN
- ▶ CONVEYOR CONSOLES
- ▶ STEPS



FLOW FRAME  
THE BENEFITS

- Extremely light and robust construction even for rough workshop use
- Customizable in just a few simple steps
- Stable screw/plug connection
- 2 standard frame types (combi and heavy) for different loading capacities up to 300 kg/square meter
- Bay widths and flow depths freely selectable
- Unloading Individual design with shelf
- Ergonomics picking area
- Extremely resilient roller tracks
- Simple and individual integration of driven conveyor technology
- Integration flow frames into all conventional pallet racks can be realized

• Different accessories on request

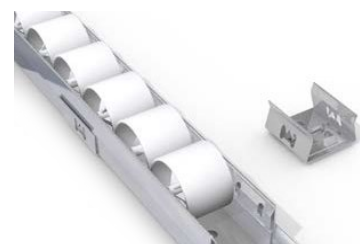


SYSTEM COMPONENTS  
ROLLERTRACKS

- Torsionally rigid, self-stabilizing profile made of galvanized sheet steel
- Lengths mm-accurate according to customer requirements, maximum part length: 6,000 mm up to 20,000 mm possible
- Roll pitch T = 33 mm: with best running properties due to the geometry (roller 32 mm diameter)
- Material: high-quality plastic (natural white)
- Also, standard rollers suitable for freezing area - 35°
- ESD version (roll highly conductive)
- Bearing on steel axes, resulting in long service life, low-slope operation and high load capacity (12 daN)
- Millions of times in use worldwide



ROLLETRACK SINGLE PARTS  
SPRING CLAMP



- For the integration of the roll strips into other shelving systems
- Material: Spring steel

ROLLETRACK SINGLE PARTS  
BRAKEROLLERS



- Easy installation by replacing the rollers
- Enable applications sorting buffers, supermarket applications, for extreme flow depth, especially with a large inclination

ROLLETRACK SINGLE PARTS  
BRAKE CLIP



- Mounted at 3 rollers
- To break the stored goods before the stop (Attention: no restarting!)
- Material: Spring steel

ROLLETRACK SINGLE PARTS  
PUSHBACK UNITS



- Easy assembly
- Prevent collisions between stored goods and mini load crane
- Material: plastic, running with steel axes

ROLLETRACK SINGLE PARTS  
PLASTIC ENDSTOP



- Elimination of the continuous stop, allows intervention between the tracks
- Mounted/fixing with steel axes
- Fixing with drilling screw on beams

- Using in channels of min load systems
- Material: Plastic

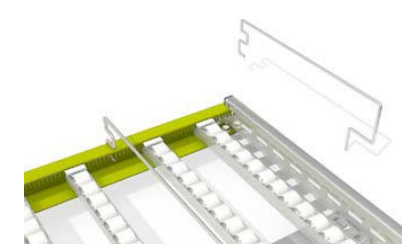


SYSTEM COMPONENTS FOR  
GUIDING

- For lateral separation and guidance of the stored goods
- Maximum part length: 6,000 mm but up to 20,000 mm possible
- Tool-free adjustment of the channel width
- Material: galvanized, torsion-resistant sheet steel profile
- Also available as a cut-off strip in tube design, diameter 20 mm, length up to 2,500 mm
- Special guide bars for special cases



COMPONENTS  
WIRE ENTRY GUIDS



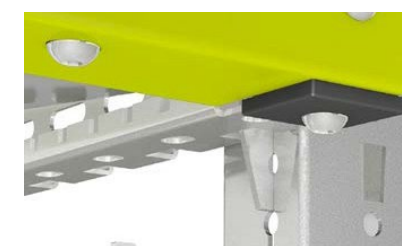
- For channel separation at short throughput depths, 400 mm long
- Including special beam and rear profile, each with special perforations

COMPONENTS  
RACKING SYSTEM



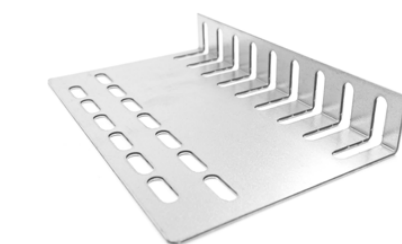
- Flexible screw module system consisting of upright legs diagonals and beams
- Beams powder coated RAL.... other components galvanized
- Column heights: 1,800, 2,120, 2,520 mm or (other dimensions on request)
- Connection of the support frames with beams, maximum bay width: 3.800 mm
- Lateral perforation for slope adjustment pitch of 20 mm
- If necessary, beams screwed (for mobile flow racks)

COMPONENTS  
AQS-PIN



- Plugged in pin
- Side profile support

COMPONENTS  
UNIVERSALADAPTER 230 MM



- Fits 90% of all shelving systems